

Seasonal Specialty Stores 2016 Celebrity Special Order Hot Tubs



Vegas Celebrity Series

- Exterior Dimensions: 84" x 84" x 34"
- Seating Capacity: 7/7 seats
- Water Capacity: 370 gallons
- Number of Jets: 50 jets
- 2 Pumps: 290 GPM
- Electrical Requirements: 240V/30 or 50 amp
- Steps not included

VEGAS



Hollywood Celebrity Series

- Exterior Dimensions: 84" x 84" x 34"
- Seating Capacity: 6/6 seats
- Water Capacity: 350 gallons
- Number of Jets: 45 jets
- 1 Pump: 290 GPM
- Electrical Requirements: 240V 30 or 50 amp
- Steps not included

HOLLYWOOD



Broadway Celebrity Series

- Exterior Dimensions: 77" x 77" x 34"
- Seating Capacity: 4/5 seats
- Water Capacity: 310 gallons
- Number of Jets: 28 jets
- 1 Pump: 120 GPM
- Electrical Requirements: 120V/15 amp
- Steps not included

BROADWAY



Napa Celebrity Series

- Exterior Dimensions: 76" round x 34"
- Seating Capacity: 5/6 seats
- Water Capacity: 250 gallons
- Number of Jets: 15 jets
- 1 Pump: 120 GPM
- Electrical Requirements: 120V/15 or 240V
- Steps not included

NAPA

Seasonal Specialty Stores 2016 Celebrity Special Order Hot Tubs

Celebrity Color Choices

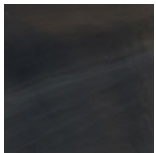
Acrylic



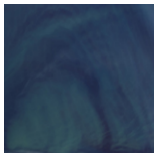
Sterling Silver Swirl



Glacier



Midnight Canyon

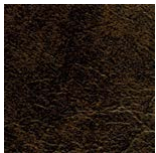


Pacific Rim

Covers



Charcoal

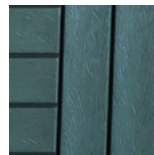


Walnut

Covers



Mahogany



Slate

Celebrity Hot Tubs Special Orders 2016

| Model | Order Code | Original (Rush) | Next Truck |
|-------------|------------|--|------------|
| Vegas-K | CV6 | Due to complaints from another dealer, Marquis has removed our prices from the web. | |
| Hollywood-K | CH6 | | |
| Broadway-K | CB6 | | |
| Napa-K | CN5 | | |

Options & Upgrades Available

| | |
|---|---------------------------------------|
| Interior Colors (Sterling Silver, Pacific Rim, Black Pearl) | \$199 |
| Stainless Steel Jets | \$129 |
| CD Chip Ozonator | \$149 |
| Motown Audio with Bluetooth | \$699 |
| WIFI Transceiver for APP (with 1 year cloud subscription) | \$399 |
| RF Audio Control Kit | \$199 |
| Handi Step II | \$129 (\$199 Rush, \$159 Next Truck) |
| | Reversible, Plastic, Gray or Espresso |

Standard Features

- Interior Color:** Glacier
- Exterior colors:** Mahogany, Slate
- Cover Colors:** Walnut, Charcoal
- Lighting:** Theatre LED
- Warranty:** Five year shell structure, two year plumbing and major equipment, one year labor and non-wear parts.*



**MADE IN
USA**

For a strong product and a strong country.

*All warranties are limited, and are available for you to read before you buy.